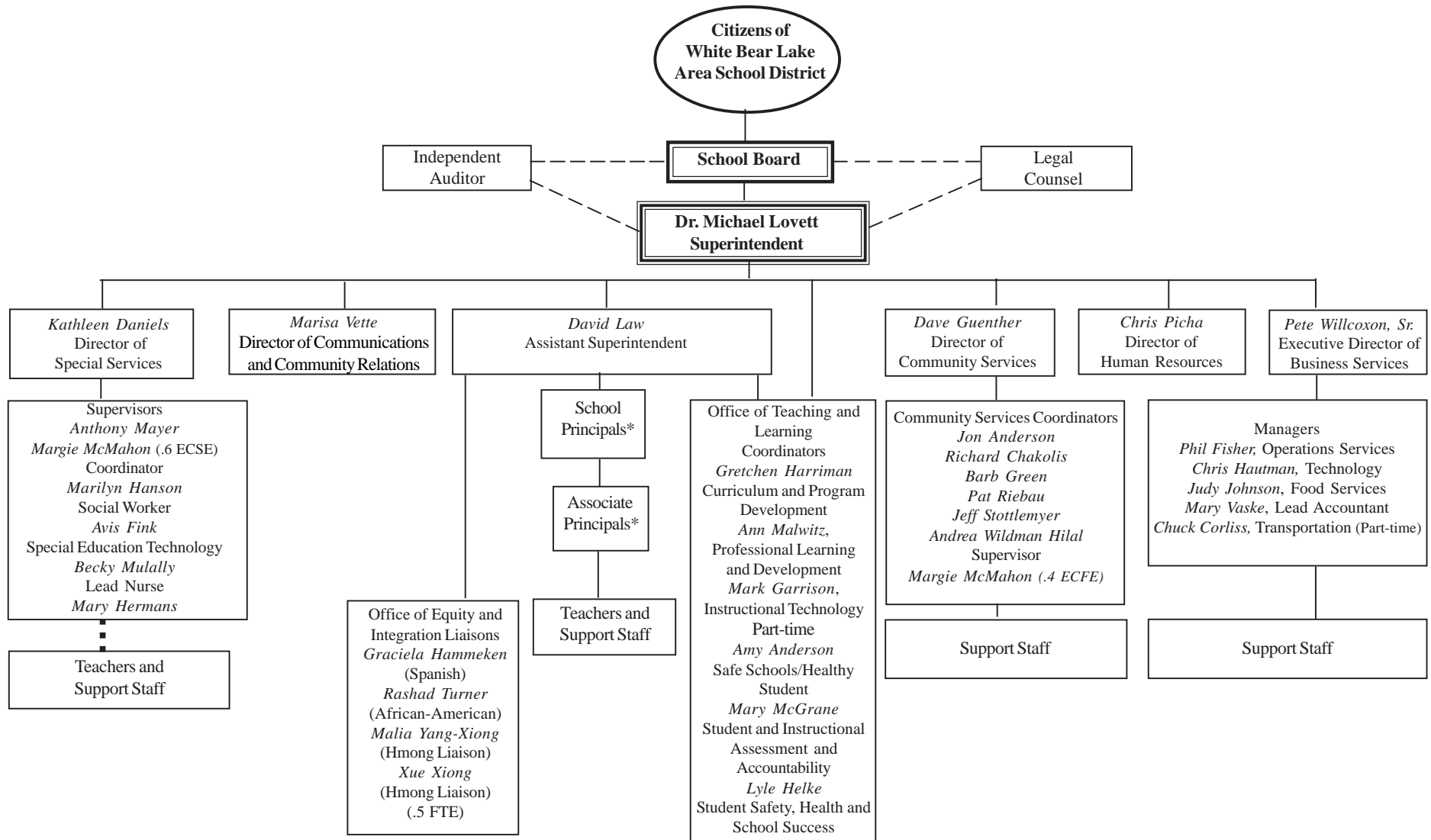


WHITE BEAR LAKE AREA SCHOOL DISTRICT

2010-11 ORGANIZATIONAL CHART

Revised: 2-22-11



*School Principals and Associate Principals		
<p><u>Elementary Schools</u> Birch Lake Elem. - <i>Dan Schmidt</i>, Principal <i>Jason Healy</i>, Associate Principal Hugo Elem. - <i>Teresa Dahlem</i>, Principal <i>Elizabeth Stanson</i>, Administrative Intern Lakeaires Elem. - <i>Cary Krusemark</i>, Principal Lincoln Elem. - <i>Dan Schmidt</i>, Principal Oneka Elem. - <i>Teresa Dahlem</i>, Principal</p>	<p><i>Otter Lake Elem.</i> - <i>Max DeRaad</i>, Principal <i>Matoska International</i> - <i>John Leininger</i>, Principal <i>Vadnais Heights Elem.</i> - <i>Sara Svir</i>, Principal <i>Willow Lane Elem.</i> - <i>Barbara Kearn</i>, Principal</p>	<p><u>Middle Schools</u> Central Middle School - <i>Noel Schmidt</i>, Principal <i>Bob Brewer</i>, Associate Principal Sunrise Park Middle School - <i>Robert McDowell</i>, Principal <i>Carrie Barth</i>, Associate Principal</p>
		<p><u>High Schools</u> North Campus - <i>Donald Bosch</i>, Principal <i>Dion Harriman</i>, Associate Principal <i>Christina Pierre</i>, Associate Principal South Campus - <i>Tim Wald</i>, Principal <i>Brian Leonard</i>, Associate Principal <i>Carol Tarsa</i>, Administrative Intern Area Learning Center - <i>Julia Jilek</i>, Director 9-12 Student Activities Director - <i>Tim Hermann</i></p>