

Important Schoology Log-in Information

Students:

Once a child has signed the Electronic Technologies Acceptable Use Policy Students then s/he may log on to White Bear Apps and Schoology

Students log on the same way teachers do:

- You can simply go to whitebear.schoology.com and enter your White Bear Apps (Google) log-in credentials
 - NOTE: There is no www on this web address

OR:

- First sign in to your White Bear Apps account
 - 9-12 go to mail.isd624.org
 - K-8 go to docs.isd624.org
- Then open a new tab and go to whitebear.schoology.com.
 - Students will be automatically logged in.
 - Students **do NOT** go to Schoology.com anymore.
- Reminder:
 - Student Apps *Username* is their student id
 - Student Apps *Password* is their skyward password (But they will be prompted to change this the first time they log in.)

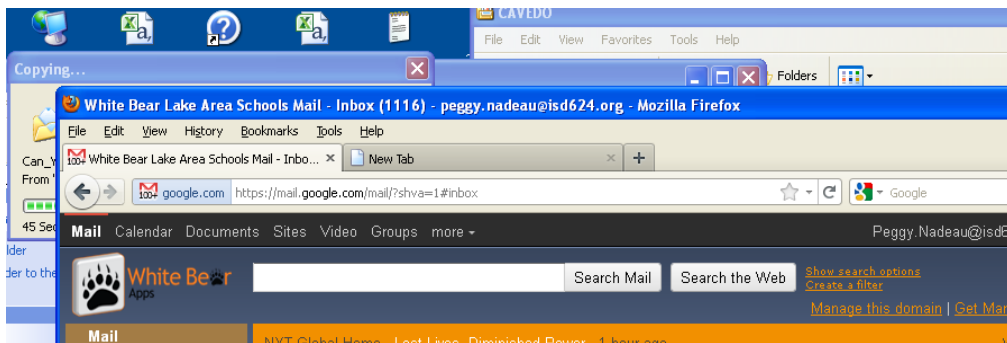
Parents:

Once your students are enrolled in your Schoology course you can give parents access to also view Schoology.

- [Click here](#) to view a short video review Schoology student enrollment and parent access.
- [Click here](#) for parent log-in directions.

Logging into Schoology

Login to GoogleApps



Open another tab and enter <http://whitebear.schoology.com>

Your schoology account will open.

